



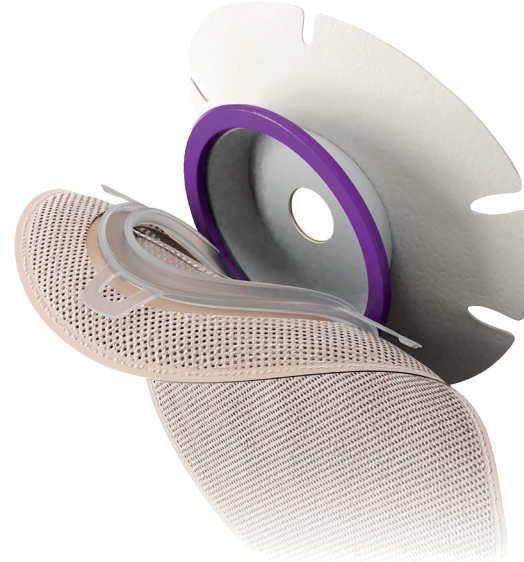
Choose eakin dot® 2-piece to manage long term health conditions along with a stoma

4 reasons to use:

1. Choosing the correct appliance is an important aspect in a person's overall recovery after ostomy surgery.¹
2. The goal of both nurse and patient is to achieve a predictable, reliable wear time.²
3. A long-term health condition can have a significant impact on a person's ability to live a normal life.³
4. Long term health conditions are likely to affect the person's ability to manage their own care independently. There will be careful consideration to the specific condition and the individual restrictions when recommending an appropriate product to promote optimum self-care, management and independence for the ostomate.³

Patient History:

- 75 year old gentleman with poor mobility who lives alone
- Diagnosed with Rectal Cancer
- APER with formation of end colostomy
- History of chronic illness including Parkinson's Disease, bipolar disorder, hypertension, aortic stenosis and osteoarthritis



Nurse recommends eakin dot® 2-piece:

- Stoma care nurse assessed individual ability and recommended eakin dot® 2-piece immediately post-op
- Reviewed patient 3 weeks post operatively

Nurse review:

- He reports **no leakages** with eakin dot® 2-piece system
- This has had a **considerable positive impact on building his confidence**
- Peristomal **skin is healthy**
- Self-managing his stoma care and appliances
- He only needs to change the base every 3-4 days
- He states he **'loves his bags'** and particularly likes the **easy coupling** system that he can hear **'click'** when pouch is applied



Outcome:

- He is **managing very well** with **no issues or leakages**
- Stoma remains red and flush to his skin, 30mm round
- Peristomal **skin is intact**
- Despite his increasing tremor from his Parkinson's disease, **he can align the baseplate with the bag with ease**

Clinical evidence for choosing eakin dot® 2-piece:

- Improves peristomal skin problems
- Ease of use
- **skinsmart™** hydrocolloid for longer-life wear
- Meets the individual needs of ostomates



A SMALL PART
OF A BIGGER LIFE

Case study submitted by:

Kelly Vickers,
Stomal Therapy Nurse,
Lyell McEwin Hospital,
Adelaide,
South Australia.

References:

1. Williams J, Gwilliam B, Sutherland N, Matten J, Hemmingway J, Iley H et al (2010) Evaluating skin problems in people with stomas. BJN 19(17): s6-15 2. Wound, Ostomy, Continence Nurses Society(WOCN). (2013) Colostomy and Ileostomy: Products and tips. Mt. Laurel, NJ: WOC 3. Readding L (2016) Practical guidance for nurses caring for patients with long-term conditions. British Journal of Community Nursing21(2) 90-98