

eakin **dot**<sup>®</sup> 2-piece is designed to help address these challenges. Allowing ostomates to get on with their life.

## How to order eakin **dot**<sup>®</sup> 2-piece

### Convex Base Plates

Product code	Stoma size	Ring size	Pack size
839820	CTF 15-40mm	60mm	5
839821	20mm	60mm	5
839822	22.5mm	60mm	5
839823	25mm	60mm	5
839824	27.5mm	60mm	5
839825	30mm	60mm	5
839826	32.5mm	60mm	5
839827	35mm	60mm	5
839828	37.5mm	60mm	5
839829	40mm	60mm	5
839830	CTF 15-60mm	80mm	5

### Flat Base Plates

Product code	Stoma size	Ring size	Pack size
839800	CTF 15-37.5mm	60mm	5
839801	20mm	60mm	5
839802	22.5mm	60mm	5
839803	25mm	60mm	5
839804	27.5mm	60mm	5
839805	30mm	60mm	5
839806	32.5mm	60mm	5
839807	35mm	60mm	5
839808	37.5mm	60mm	5
839809	CTF 15-50mm	80mm	5
839810	40mm	80mm	5
839811	45mm	80mm	5
839812	50mm	80mm	5

### Closed Pouches

Product code	Pouch size	Ring size	Pack size
839900	Mini	60mm	30
839901	Standard	60mm	30
839902	Maxi	60mm	30
839920	Standard	80mm	30
839921	Maxi	80mm	30

### Drainable Pouches

Product code	Pouch size	Ring size	Pack size
839903	Mini	60mm	30
839904	Standard	60mm	30
839905	Maxi	60mm	30
839922	Standard	80mm	30
839923	Maxi	80mm	30

Contact us for samples



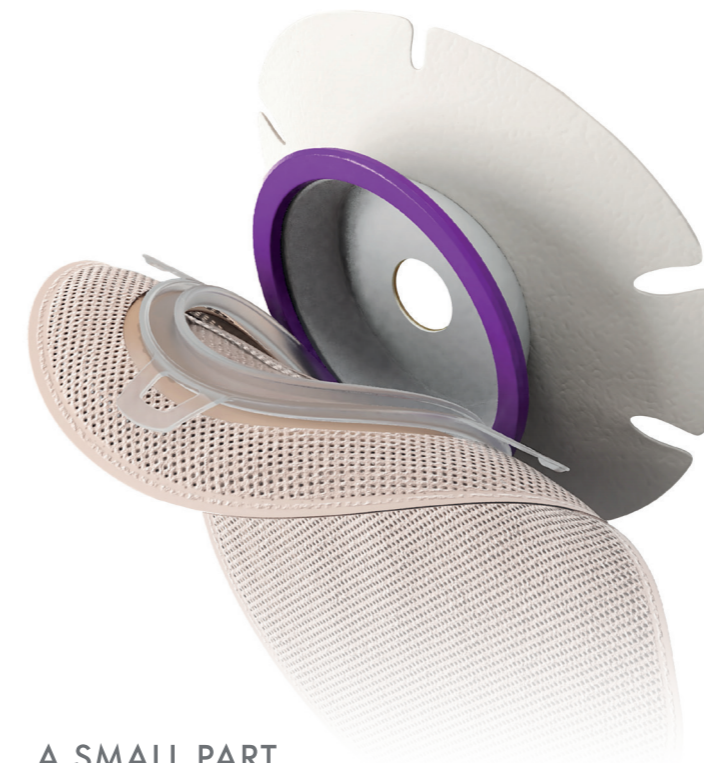
eakin **dot**<sup>®</sup>

mail@eakin.co.uk  
www.eakin.eu

ED2PC-AN2020

LEARNING DIFFICULTIES  
REDUCED MOBILITY  
POOR DEXTERITY  
IMPAIRED VISION

Choose eakin **dot**<sup>®</sup> 2-piece to support an ostomate with **additional needs**



Managing a stoma can be difficult for anyone, but for an ostomate with **additional needs**, stoma care can become more of a **challenge**.<sup>1-6</sup>

eakin **dot**<sup>®</sup>

A SMALL PART  
OF A BIGGER LIFE

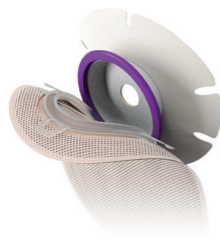
1. Black P (2011) Caring for the patient with a stoma and dementia, *Gastrointestinal Nursing*, 9, 7, 19-24.  
2. Powell C (2013) Using reflection to treat stoma patients with dementia, *Gastrointestinal Nursing*, 11, 7, 52-60.  
3. Williams J, Gwillan B, Sutherland N, Matten J, Hemmingway J, Ilsey H et al (2010) Evaluating skin problems in people with stomas, *BJN* 19(17): s6-15  
4. Colostomy UK Caring for a person with a stoma and dementia, December 2017, Copyright ©2016, 2017 Colostomy UK  
5. Burch J (2016) Treating an older person with a stoma and comorbidities, *Nursing and Residential Care Journal* 18:2 68-70  
6. Wound, Ostomy, Continence Nurses Society(WOCN) (2013) Colostomy and Ileostomy: Products and tips, Mt. Laurel, NJ: WOCN  
7. eakin dot® 2-piece consumer trials on hydrocolloid for longer-life wear (n=162), Data on file (2017-18)  
8. eakin dot® 2-piece nurse case study (ED2PSC/CS3), Data on file, 2019.  
9. Bowles T & Readding L., Caring for people with arthritis and a stoma, *British Journal of Nursing*, 2013 (Stoma supplement) Vol 22 No 16, S14-S17

# The 3 unique innovations of eakin dot® 2-piece can help ostomates with additional needs...

**Challenge:** Does not recognise the stoma pouch and tries to remove it<sup>1</sup>

## 1 'Peel down' discourages accidental removal<sup>8</sup>

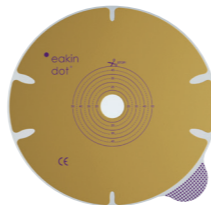
- ✓ eakin dot® 2-piece has **secure coupling** that ensures the pouch can't be pulled off in error.<sup>8</sup>
- ✓ The **'peel down'** action to remove the pouch provides **greater control** and an **easier pouch change** for carers.<sup>7</sup>



**Challenge:** Unable to change the pouch<sup>9</sup>

## 2 skinsmart™ hydrocolloid offers extended pouch weartime<sup>7</sup>

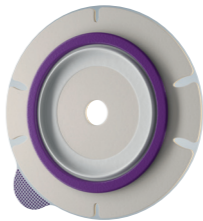
- ✓ It **sticks instantly** to the skin offering **extended weartime** and **added security** for the user.
- ✓ As the baseplate **stays in place for longer**<sup>7</sup> there is **no need to change pouch as often**, meaning **less planning** for the user.



**Challenge:** Reduced dexterity<sup>5</sup>

## 3 Purple guiding ring helps with pouch attachment<sup>7</sup>

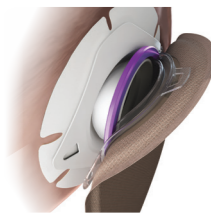
- ✓ eakin dot® 2-piece is **easy to use** thanks to the **purple guiding ring** which acts as a **visual aid** for pouch application
- ✓ The audible **'click'** indicates when bag and baseplate are **securely attached**.



**Challenge:** Unable to see the pouch or baseplate

## PLUS Purple guiding ring with audible "click"

- ✓ eakin dot® 2-piece has an **easy to feel**, pop up guiding ring with ample space for fingers to align the pouch and baseplate.
- ✓ When aligned there is an audible **'click'** indicating **secure attachment** - giving **peace of mind**.



### eakin dot® 2-piece is **secure**, preventing unintentional removal

#### Patient history:

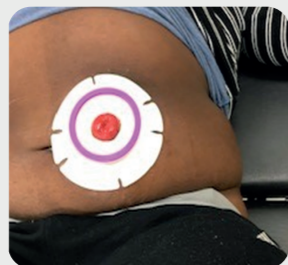
- Young boy with Down syndrome, with a history of faecal incontinence.
- Decision to proceed with colostomy surgery.

#### Nurse Review:

- Family and medical team concerned that the boy would **pull off the appliance**.
- A pre-op trial of various 2-piece appliances was undertaken to determine **security**.

#### Outcome:

- Choose eakin dot® 2-piece due to its **secure attachment** and **skinsmart™** hydrocolloid.
- The boy leaves the stoma alone and **cannot pull the pouch off**.
- Foster parents able to manage pouch changes and established a **problem free stoma care routine**.



Case submitted by  
Marijke Voskeuil,  
Nursing Specialist Msc Pediatric  
Surgery, Amsterdam UMC,  
Academic Medical Centre

### eakin dot® 2-piece **for longer-life wear**

#### Patient history:

- 54 year old lady diagnosed with anal atresia at birth, resulting in faecal incontinence.
- Experiencing **deteriorating mobility** and **impaired dexterity**.
- Formation of colostomy in 2011.

#### Nurse Review:

- Large parastomal hernia
- **Peristomal skin problems** and **daily leakages**.
- Nurse recommends eakin dot® 2-piece 80mm ring size due to size of hernia.

#### Outcome:

- Achieves **3 day weartime** from baseplate.
- **No further leakages**, **comfortable** to wear and **easy to apply** and **remove**.
- The **purple guiding ring** helps her to **attach the pouch easily**.



Case submitted by  
Petra Smeiters  
Stoma Care Nurse,  
Catharina Cancer Institute,  
Eindhoven  
The Netherlands

### eakin dot® 2-piece is **easy to use**

#### Patient history:

- 75 year old man with poor mobility.
- Diagnosed with Rectal Cancer, formation of end colostomy.
- History of chronic illness including Parkinson's Disease, aortic stenosis and osteoarthritis.

#### Nurse Review:

- Stoma care nurse recommended eakin dot® 2-piece immediately post-op.

#### Outcome:

- Despite his increasing tremor from Parkinson's Disease, he **can align the baseplate with the bag with ease**.
- He **'loves his bags'**, particularly the **easy coupling** system and the **'click'** when pouch is applied.
- **No leakages** which has a **very positive impact on his confidence**.
- Peristomal skin is **healthy**.
- **Self-managing** his stoma care routine with confidence.



Case submitted by  
Kelly Vickers,  
Stomal Therapy Nurse,  
Lyell McEwin Hospital,  
Adelaide, South Australia

### eakin dot® 2-piece **allows self management**

#### Patient history:

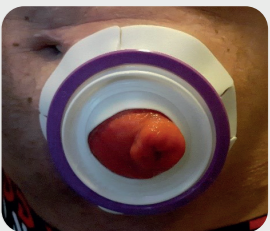
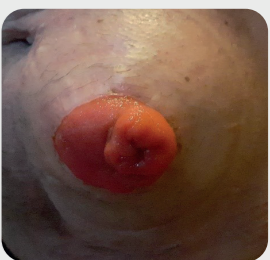
- 64 year old man, registered as blind.
- 2010-2014: Temporary stoma due to colon cancer.
- 2019: Ileostomy due to faecal incontinence. Large oval stoma and hernia.

#### Nurse Review:

- Previous 2-piece system was difficult to use with regular leaks.
- Patient dependent on community care.
- Recommended eakin dot® 2-piece, closed pouch.

#### Outcome:

- **Self-manages** pouch changes up to 3 times per day and occasional baseplate changes
- **No leaks** so **confidence** and **independence** is restored - he is able to socialise again.
- Community care visits reduced.



Case submitted by  
HagaZiekenhuis, The Hague  
Barbara Weterings & Annette  
Gardien, Stomal Therapy Nurses  
The Netherlands