



eakin dot® 2-piece flat  
with 80mm ring

Choose  
eakin dot®  
2-piece post-  
operatively for  
painful/tender  
abdomen\*

#### 4 reasons to use:

1. Easy to use
2. Improve security, comfort, and patients peace of mind<sup>1,2</sup>.
3. Flexible fluted baseplate that flexes with body contours<sup>1,2</sup>.
4. Large cut to fit 80mm ring, ideal for oval or large stomas<sup>2</sup>.

\*The patient in this case study was assessed and advised by a stoma therapy nurse

#### Case study submitted by:

Dominique Pautard,  
ET Nurse, Centre Hospitalier d'Ardèche  
Nord, France

1. eakin dot® 2-piece user evaluations. Data on file, 2017-2019  
2. eakin dot® 2-piece nurse case study. Data on file, 2020

#### Patient history:

- 49-year-old male, **tiler craftsman**.
- Emergency admission to hospital with abscess and colonic perforation requiring a **temporary left colostomy** (using Hartman's procedure).

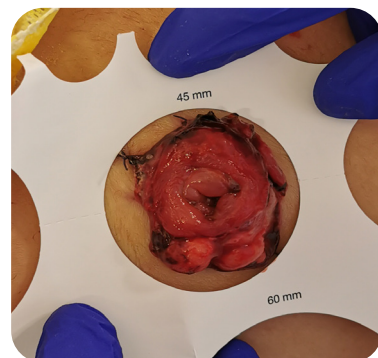


#### Problems:

- Patient suffered peritonitis with **severe abdominal pain**, insertion of numerous drains and required admission to intensive care.

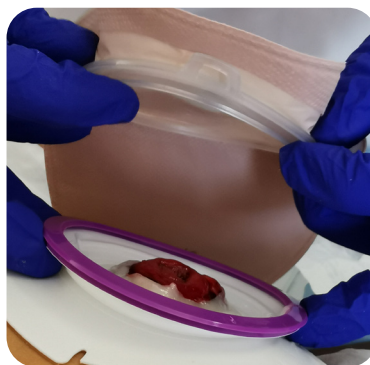
#### Solution:

- In order **to limit pressure** on abdomen when placing the pouch, a 2-piece fluted system with floated flange was considered appropriate.
- eakin **Cohesive**® paste completed the stoma care routine to ensure a good seal.



#### Success with eakin dot® 2-piece flat:

- Patient found **peace of mind** and **independence** was restored.
- He can now go out and have a social and **professional life** again.



#### Clinical evidence for choosing eakin dot® 2-piece flat:

- Baseplate with purple ring, flange and audible "CLICK" to ease application and removal while changing the bag<sup>1</sup>.
- **skinsmart**™ hydrocolloid for longer-life wear is clinically proven to offer greater security, pouch wear time and skin-friendliness compared to other market leading pouches<sup>1</sup>.



A SMALL PART  
OF A BIGGER LIFE