

Parietal necrosis around a double ileostomy

using eakin **Wound Pouches™** and accessories

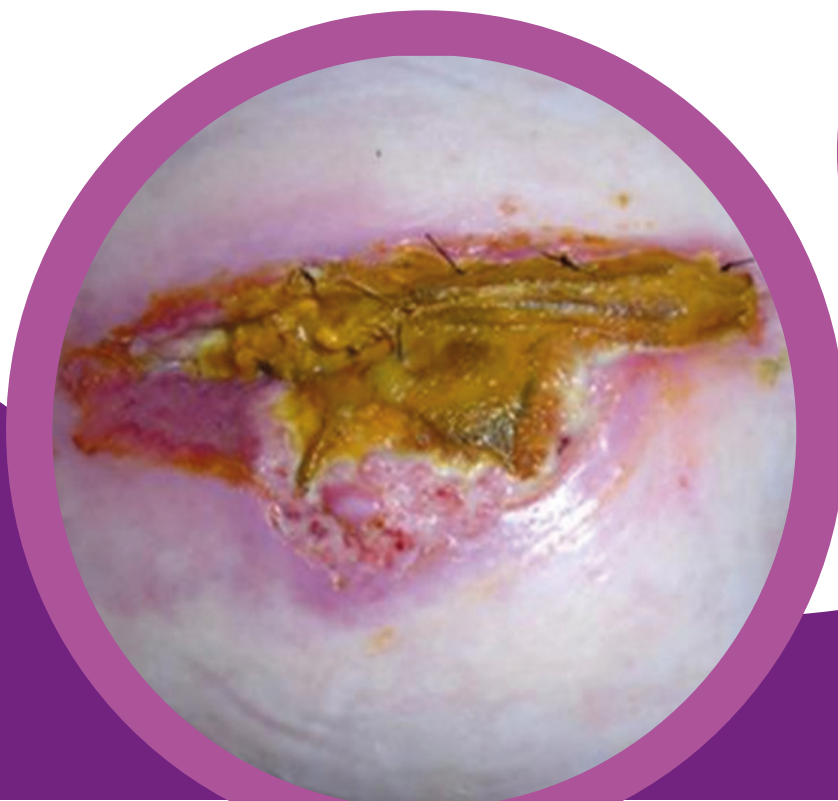
Case study submitted by:
Manuela Hagues, Stoma Care Nurse,
Pavillon Derocque - CHU de Rouen, France

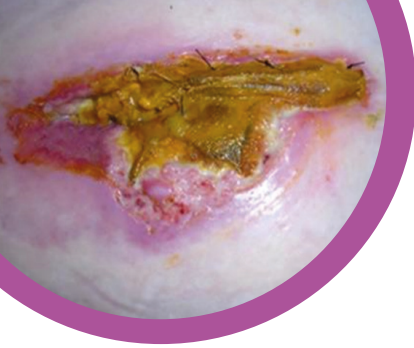
PATIENT HISTORY

- 72-year-old lady.
- Cholecystectomy complicated with laceration to small intestine.
- Surgeon decided to create a double ileostomy.
- History of obesity, insulin-dependent diabetic, chronic atrial fibrillation, hypertension, double pulmonary embolism, pancreatic lithiasis.
- Previous appendectomy, hysterectomy, sigmoidectomy.
- Lives alone but is well supported.

CARE MANAGEMENT PLAN

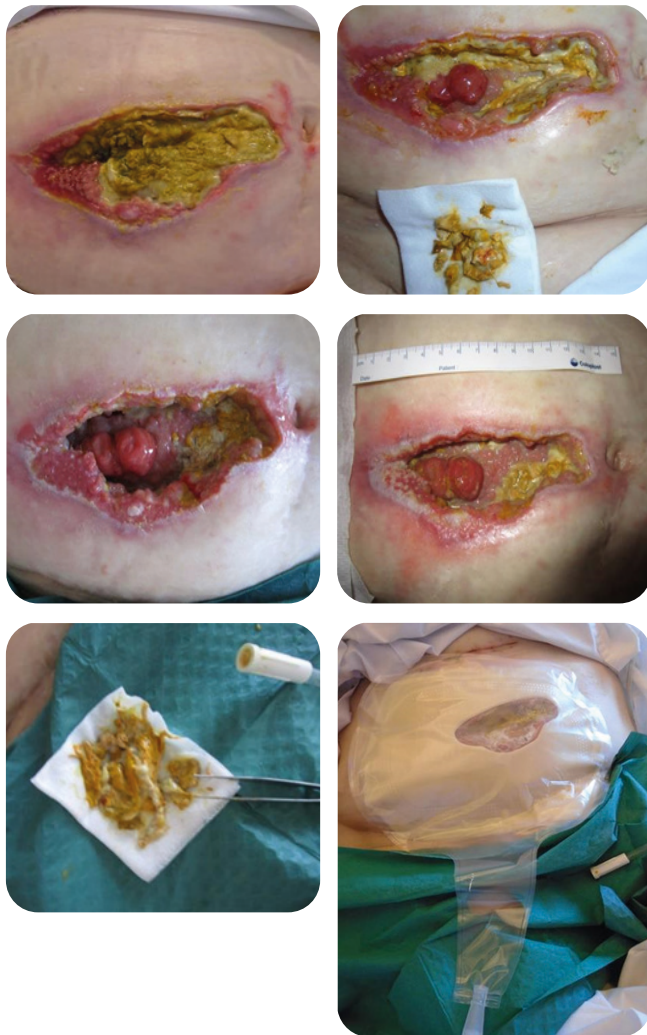
- First review at ICU, she presented with a large necrotic area adjacent to laparostomy scar with abundant flow of digestive output.
- Drainage pouch with large diameter used but struggling with multiple leakages, resulting in damaged periwound skin.
- Commenced debridement of necrotic tissue.
- Changed to an eakin **Wound Pouch™** without window (initially). This stayed in place for 8 days.





DEBRIDMENT OF NECROSIS

and application of eakin **Wound Pouch™**



UTILISING EAKIN **ACCESS WINDOWS™** FOR DIRECT ACCESS TO THE WOUND

Application of eakin **Access Window™** allowed access to continue debridement, support the wound healing process and to manage output coming from the ileostomy.

eakin **Access Window™** provided direct access to clean, add alginates and reinforce seal (eakin **Cohesive®** paste and stomawrap). This allows the pouch to stay in place for longer, providing greater comfort to the patient.



eakin **Wound Pouch™** stayed in place for 11 days, thanks to the good quality of the skin barrier.

PROGRESSIVE WOUND HEALING

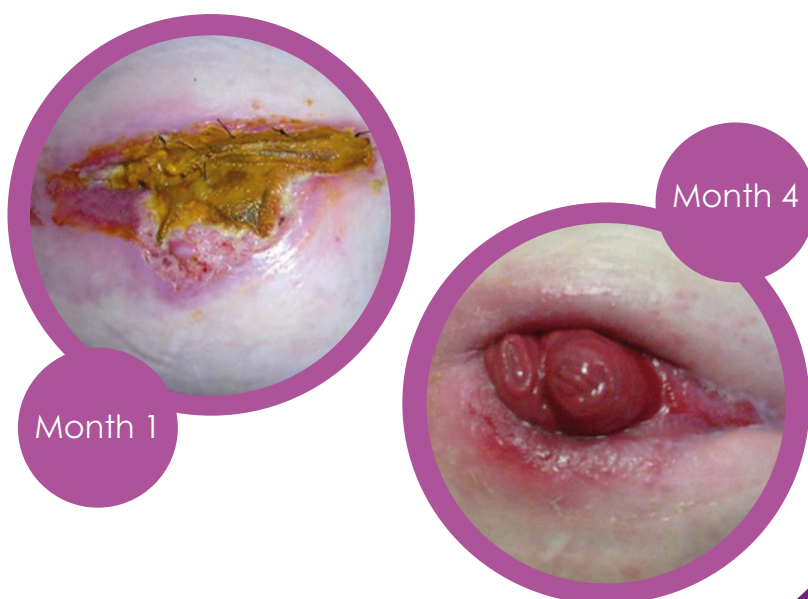


SUCCESSFUL SOLUTION

There are 4 months between these 2 photos. The months were long and at times painful for the lady, not only having an impact on her physical well-being but also her psychological well-being.

As is evident from the images, the wound successfully healed allowing the lady to manage her stoma alone.

Eventually the stoma was successfully reversed.



PRODUCT USED

| | |
|---------------------------------------|--------|
| Extra-large eakin Wound Pouch™ | 839263 |
| eakin Access Window™ large | 839280 |
| eakin Cohesive® stomawrap | 839005 |
| eakin Cohesive® large | 839001 |

