

eakin dot®

2-piece flat system
80mm ring size

Choose eakin dot® 2-piece for severe sight impairment

4 reasons to use:

1. Easy to use¹ even in the event of severe sight impairment²
2. Increased patient security, comfort and confidence^{1,2}
3. Flexible, fluted baseplate moulds to body contours^{1,2}
4. Large CTF and 80mm ring size ideal for large oval stoma²

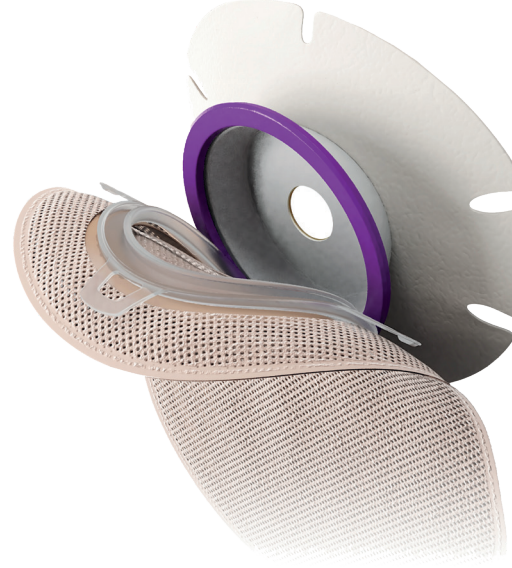
Case study submitted by:

HagaZiekenhuis, The Hague
Barbara Weterings & Annette Gardien
Stomal Therapy Nurses
The Netherlands

1. eakin dot® 2-piece user evaluations. Data on file, 2017-2019
2. eakin dot® 2-piece nurse case study. Data on file, 2020

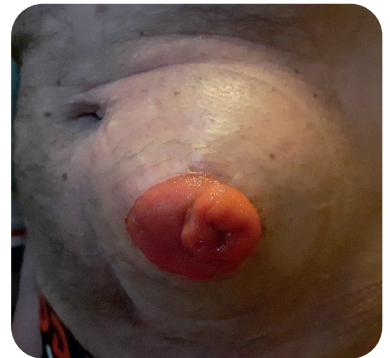
Patient History:

- 64 year old man, **registered blind**.
- Has guide dog for assistance.
- **2010-2014:** Temporary stoma due to colon cancer.
- **2019:** Ileostomy due to faecal incontinence. Large oval stoma and hernia.



Problems

- **2010-2014:** Used 2-piece click system with non pop-up baseplate.
- **Difficulties in attaching.**
- **Regular leaks**, pouch often disconnected.
- **Dependent** on community care up to 3 times per day for pouch changes. Thus, **unable to leave home**, despite having guide dogs.
- **2019:** Output very liquid. **Unable to use drainable pouch** as too difficult to clean independently.
- **Desperate to avoid problems** experienced with his 2-piece system during the 2010-2014 period.



Success with eakin dot® 2-piece

- Nurse recommended eakin dot® 2-piece with closed pouch.
- Patient practised prior to surgery and managed with no problems.
- **Post-surgery:** **managing pouch changes** up to 3 times per day **independently**.
- **No leaks.** Can manage occasional baseplate changes independently when needed.
- Only 2 community care visits per week to change baseplate and review skin condition.
- **Confidence and independence** restored.
- **Able to go out and socialize** again.



Clinical evidence for choosing eakin dot® 2-piece:

- Purple pop-up on baseplate, audible CLICK and "peel-down" to remove make pouch changes easier.¹
- **skinsmart™** hydrocolloid for longer-life wear clinically proven to offer greater security and pouch wear time compared to other market leading pouches.¹