

Reliable stoma care routine for an active ostomate

Case study submitted by:
Aur lie Pennec, Stoma Care Nurse,
CHU Cavale Blanche, Brest, France

PATIENT HISTORY

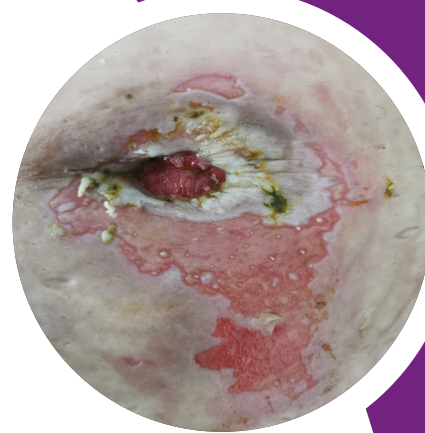
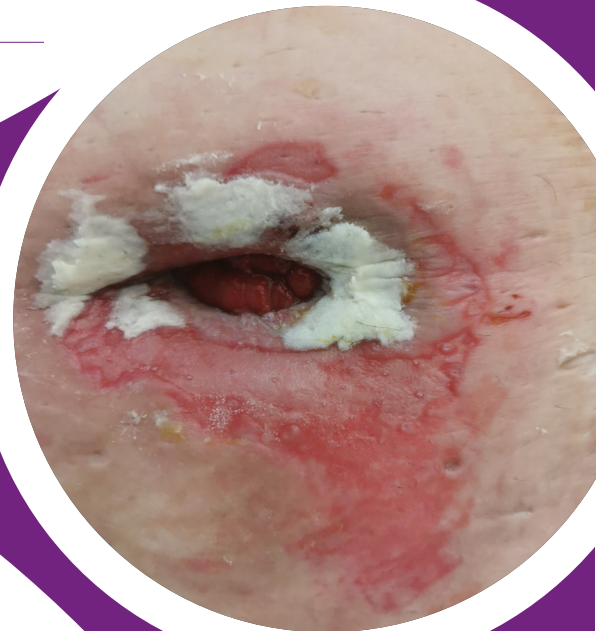
- 64 year old gentleman diagnosed with colon cancer.
- May 2023 - Sigmoidectomy with covering loop ileostomy (stoma was not planned pre-op).
- Post-operative chemotherapy required.
- Post-operative haematoma of the stoma, with subsequent retraction of stoma.
- Difficulty in seeing stoma both lying down or standing.
- Very active pre-op and enjoyed walking and sports. He weighed 200kg however had already lost 50kg.
- Poor eating habits particularly at night resulting in explosive episodes with frequent pouch leakages.

PROBLEMS EXPERIENCED

- Unable to become independent due to difficulty viewing stoma.
- HAD set up as a result of ongoing night leaks (at home management via Community Nursing Team).
- Re-hospitalised on two occasions due to fluctuating transit problems, leading to pouch leakages and subsequent peristomal skin issues.

NURSE ADVICE

- Initial trial of Coloplast 2-piece Flex pouch, Hollister seals and belt.
- **1st readmission:** Trial of alcohol-free Brava paste and eakin **dot**[®] 1-piece Convex 15-60mm, without a belt as patient reluctant to wear one.
- **2nd readmission:** Trial of eakin **Cohesive**[®] large seals cut in half used below the stoma, and Hollister paste used above the stoma, and eakin **dot**[®] 1-piece soft convex 15-60mm pouch continued to be used but cut slightly wider as the stool did not flow into the pouch when formed (stool alternated between liquid and formed).
- Discontinuation of chemo and renutrition with oral impact during his last hospitalization, with view to early reversal.



Skin 6 days post
introduction of eakin
Cohesive[®] large



Day 9 of using
eakin **Cohesive**® large



SUCCESSFUL SOLUTION

eakin **dot**® 1-piece soft convex Pouch was chosen for its soft convexity and large cutting diameter, and eakin **Cohesive**® large seal chosen for its absorption capabilities - able to manage the gentleman's extreme peristomal effluent dermatitis.

Skin: Peristomal skin began healing as soon as the eakin **Cohesive**® large seal was applied.

Stoma Management: The stoma products lasts all day even though the gentleman is very active. There is always a change of pouch during the night, most likely due to overeating in the evening.

"The gentleman no longer has pain during treatment. He can return to sport without leakage thanks to the reliability of the equipment that adapt to his body shape."

Aurélie Pennec

PRODUCT USED

eakin **Cohesive**® large

839001

eakin **dot**® 1-piece soft convex 15-60mm

840203



Day 10 of using
eakin **Cohesive**® large

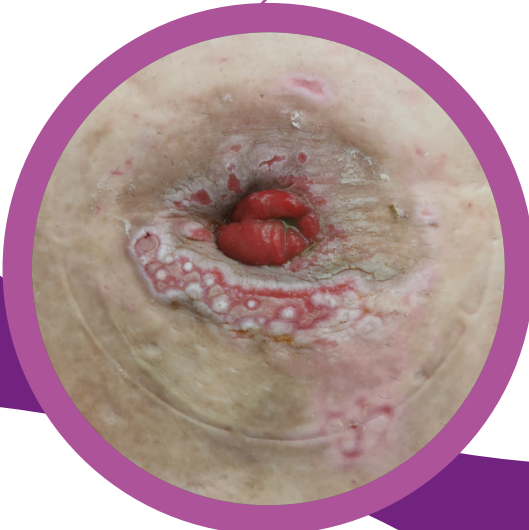
This is an individual case study and therefore claims made are the experience of the nurse and have not been further validated by **eakin**®.

eakin.eu

Day 14 of using
eakin **Cohesive**® large



Day 11 of using
eakin **Cohesive**® large



eakin
Cohesive®
seal

 **Eakin**
Healthcare